



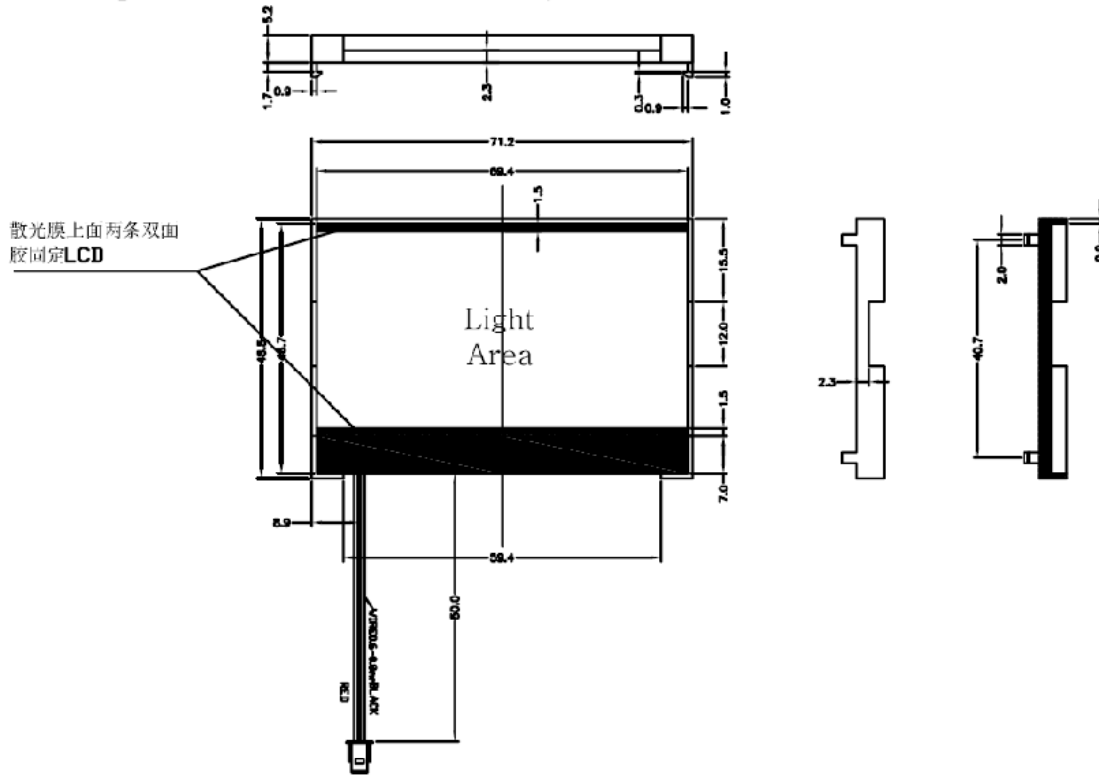
PRODUCT SPECIFICATION

Part Number
PLBLJ7148-R

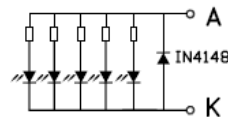
Customer	
Customer Part Number	
Description	
Approved By	
Date	

1. 结构尺寸 MECHANICAL OUTLINE
 (未注尺寸公差Unspecified Tolerances is ± 0.3)

COLOR : RED
 颜色 : 红色



2. 电路图 CIRCUIT DIAGRAM (LED 1X5=5 SMD dies)



3. 保存和焊接条件 STORAGE & SOLDERING CONDITIONS:

- Store with care. Storing the units in bad condition will cause the reflector sheet and decrease its adhesive power. Storage The products under the condition: temperature ($25^{\circ}\text{C} \pm 10^{\circ}\text{C}$) and humidity ($65\% \text{RH} \pm 20\% \text{RH}$) our recommendation.
- The Soldering Temperature is $260 \pm 5^{\circ}\text{C}$ and Soldering Time should be less than 3 sec, and soldering iron power should be less than 30W.
- The soldering point should be farther than 1.6mm ($1/10''$) from body .
- The product is sensitive to static electricity, So it's necessary to take proper steps when storing and soldering.
- 注意保存, 保存条件不好时, 会降低反光膜(扩散膜)导光片(反射壳)的粘附力。
 推荐保存条件: 温度 $25^{\circ}\text{C} \pm 10^{\circ}\text{C}$
 湿度 $65\% \text{RH} \pm 20\% \text{RH}$
- 焊接温度 $260^{\circ}\text{C} \pm 5^{\circ}\text{C}$, 焊接时间小于3秒
 烙铁功率小于 30W.
- 焊接点应离焊接实体大于1.6mm.
- 产品对静电敏感, 保存及焊接时必须有防静电措施.

4. 极限参数 ABSOLUTE MAXIMUM RATINGS (SINGLE LED)

(除非特别说明, 环境温度 $T_a=25^{\circ}\text{C}$. Unless specified, The Ambient temperature $T_a=25^{\circ}\text{C}$)

项目 Item	符号 Symbol	条件 Conditions	值 Rating	单位 Unit
* 极限直流正向电流 Absolute maximum forward current	Ifm		25	mA
* 脉冲驱动时极限正向电流 Peak forward current	Ifp	1 msec 脉冲, 1/10 占空比 1 msec Plus 10% Duty Cycle	60	mA
反向电压 Reverse Voltage	Vr		5	V
* 极限功耗 Power dissipation	Pd		50	mW
工作温度 Operating Temperature Range	Topr		-30~+70°C	°C
贮存温度 Storage Temperature Range	Tstg		-40~+80°C	°C

* 当工作温度高于 25°C 时, Ifm, Ifp 和 Pd 必须降低; 电流降低率是 $-0.36 \text{ mA}/^{\circ}\text{C}$ (直流驱动), 或 $-0.86 \text{ mA}/^{\circ}\text{C}$ (脉冲驱动), 功率降低率是 $-0.75 \text{ mW}/^{\circ}\text{C}$. 产品工作电流不能大于对应的工作条件温度 Ifm 或 Ifp 的 60 %.

For operation above 25°C , The Ifm Ifp & Pd must be derated, the Current derating is $-0.36 \text{ mA}/^{\circ}\text{C}$ for DC drive and $-0.86 \text{ mA}/^{\circ}\text{C}$ for Pulse drive, the Power dissipation is $-0.75 \text{ mW}/^{\circ}\text{C}$. The product working current must not more than the 60 % of the Ifm or Ifp according to the working temperature.

5. 电光特性 ELECTRICAL-OPTICAL CHARACTERISTICS

(除非特别说明, 环境温度 $T_a=25^{\circ}\text{C}$. Unless specified, The Ambient temperature $T_a=25^{\circ}\text{C}$)

项目 Item	符号 Symbol	最小值 min.	典型值 typ.	最大值 max.	单位 Unit	测定条件 Condition
正向电压 Forward Voltage	Vf		3.3		V	If= 50 mA
反向电流 Reverse Current	Ir			10	Am	Vr= 0.8 V
峰值波长 Peak wave length	λ_p	620		625	nm	If= 50 mA
频谱半宽度 Spectral Line Half width	$\Delta\lambda$		25		nm	If= 50 mA
* 亮度 Luminance	Lv				cd/m ²	If= 50 mA

* 亮度值是5个测量点的平均值, 亮度最大值比最小值一般小于等于1.3. 使用 ST-86LA 亮度计测量, 测量光圈 $\phi 5 \text{ mm}$.

The luminance is the average value of 5 points, and, The Lvmax./Lvmin. is 1.3 max.

The measurement instrument is ST-86LA luminance Colorimeter. The caperture is $\phi 5 \text{ mm}$.

